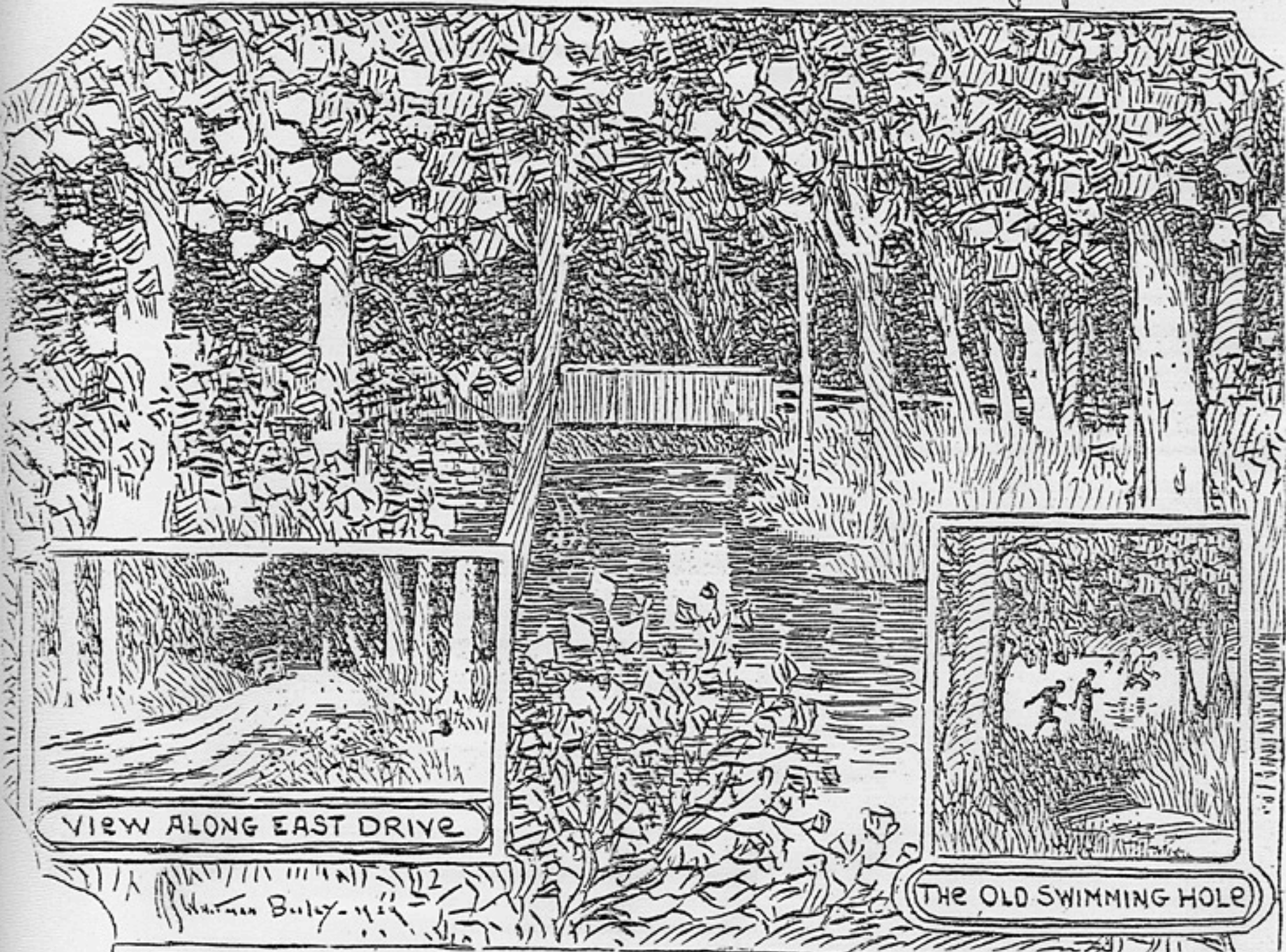


ARTIST'S VIEW OF SYLVAN SCENES IN WOODSIDE PARK

July 27 - 1929



VIEW ALONG EAST DRIVE

THE OLD SWIMMING HOLE

Many of those who have lived in Stamford for any length of time, I first remember Woodside Park as a race track. At that time the surrounding stillness was often broken by the voices of great crowds that gathered on these exciting occasions. In after years it became the circus grounds, and finally deteriorated into a wilderness, where hardly a sound could be heard, except for the gurgling of a brook, and the flute like notes of a wood thrush in his nearby tree. Stamford was then a small town,

but necessarily grew rapidly because of its proximity to New York. Little houses began to spring up on the outskirts of this great tract of woodland, but even these were at some distance apart. As a matter of fact the whole region kept its seclusion until about twenty years ago when land sales became prevalent. Little thought was given then to turning this land to a city park, for it was owned by our well known citizen, Theodore J. Ferris, who naturally loved the familiar paths where he had roamed as a boy. Doubtless

he would hesitate at parting with land that he had held so sacred. However, Stamford, like all American cities, must spread out. It must have its parks, where its population can retreat from the bustling noise of the day. By 1912 Halloween Park, now known as Cummings Park, has already become a reality and a pleasure to those who love the water. But there are always those who enjoy the quiet of the woodland. A park of the latter sort thus seemed very needed.

It was in 1926 that beautiful Woodside Park, comprised of six or eight acres, was purchased from Theodore J. Ferris. Various driveways were cut through; a baseball plot was laid out, and a natural swimming hole has given pleasure to the youngsters for the past three Summers. As a whole Woodside Park has kept its charm, and in the next few years should become one of the best parks of its kind that may be found in our New England Cities.

WHITMAN BAILEY