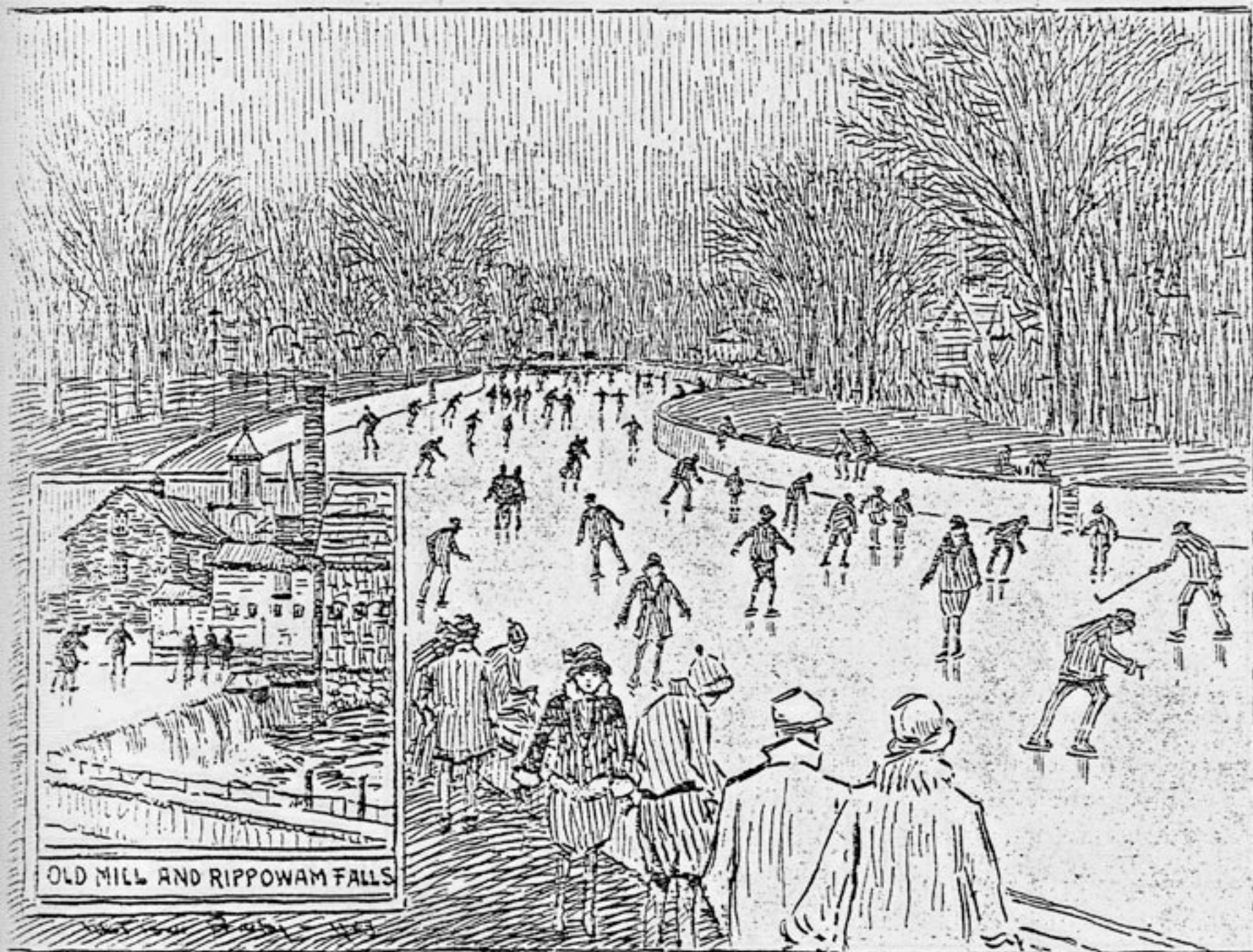


ARTIST'S VIEW OF SKATING SCENE AT RIPPOWAM PARK



OLD MILL AND RIPPOWAM FALLS

Skating today at Rippowam Park the happy slogan which most of like to hear, but to the older folk this same echo means there is skating on the mill dam—so called on account of an old mill which at one time stood on the falls on the easterly side of Rippowam River, and was afterwards partially demolished by a disastrous fire which left a small stone bridge and a brick chimney remaining.

As far back as any of us can remember, this river was always a vulgar stream for skating, but owing to its varied currents and sharp

curves, it often proved dangerous in a number of places, so that it was only the more brave that dared venture along on any one continuous trip.

Today, however, we have a beautiful small parkway, which was recently planned by the city of Stamford, on the westerly side of the Rippowam River and extends south from the Broad Street bridge almost to that of West Main Street. Two long concrete walls now follow the river within this area, where a varied number of small openings can be seen, which allow the skaters to approach this glassy surface

without any hindrance or danger to themselves. Several posts for lighting have also been placed along the west bank, which illuminate this pond at night and enables the skaters to continue their popular sport.

In the above sketch, Mr. Batley has shown a view looking up the frozen river towards Broad Street bridge, while the smaller insertion on the left, gives a glimpse of the Rippowam Falls as well as a portion of the old wooden mill which remains on the opposite side.

It is quite common to see the younger boy skaters venture towards

the falls where the inevitable some times happens, but so far without any serious results, this practice however is fast being discouraged.

Stamford is most fortunate in having this small park near the center of the city, as the beautiful shade trees within this enclosure always lend much dignity and charm during the Summer months, while in the Winter time, there is always a fascination in seeing the ice-covered river as it winds its way both north and south in serpentine fashion, covered here and there with the dark forms of enthusiastic skaters.