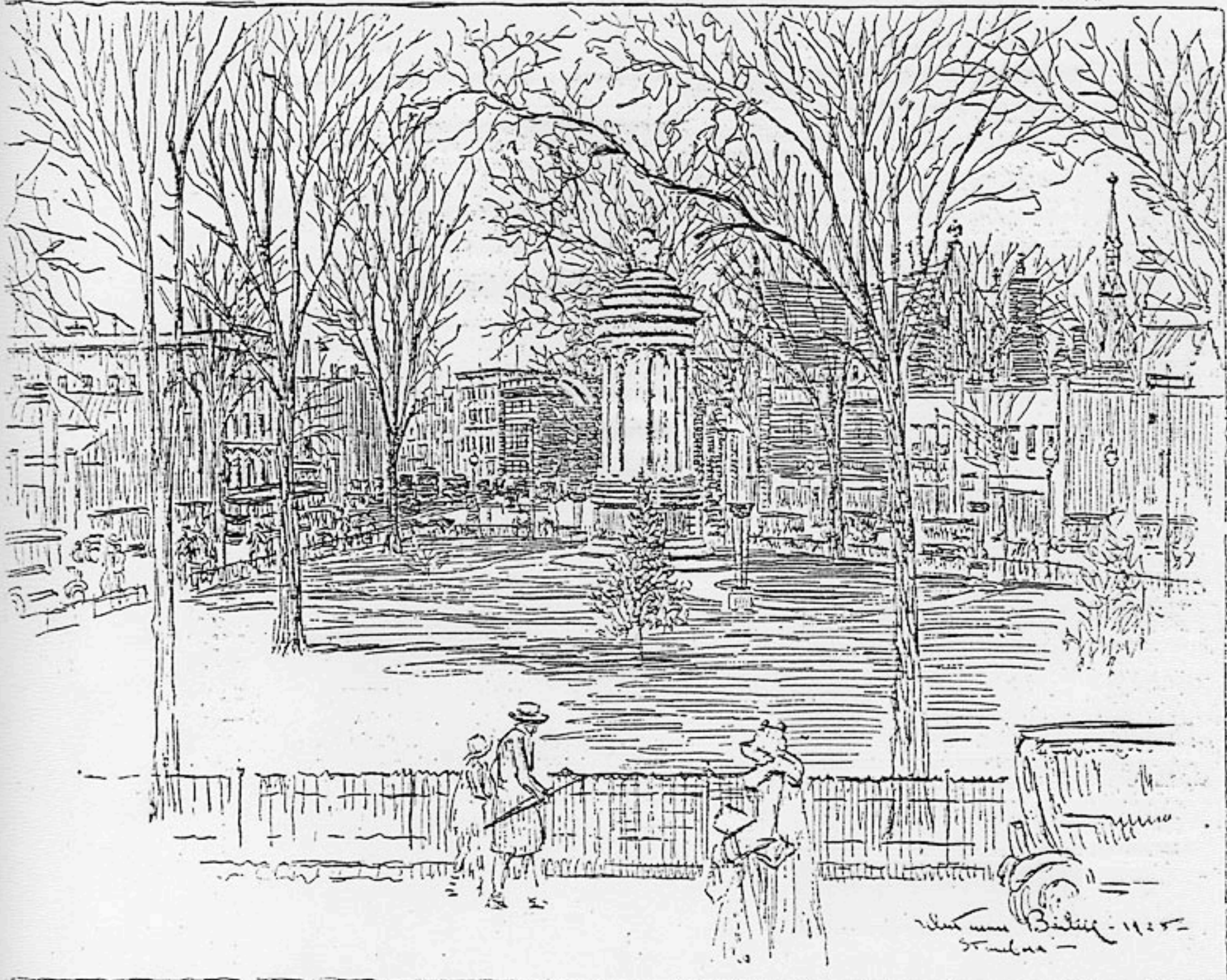


# ARTISTS' VIEW OF SOLDIERS' MEMORIAL AT ST. JOHN'S PARK.



Whitman Bailey, well-known artist of New Canaan, has given above his conception of St. John's Park as viewed from Hawthorne Street looking east. In the center is the War Memorial with Stamford's honor roll, to the left of which can be seen St. John's Episcopal Church, one of the leading places of worship in the city. On the left is the Central Fire Station, and in the rear the Suburban Club. The Boston Post Road, one of the busiest traffic highways of the country, is seen at the left of the park, which is bordered with several graceful elm trees.