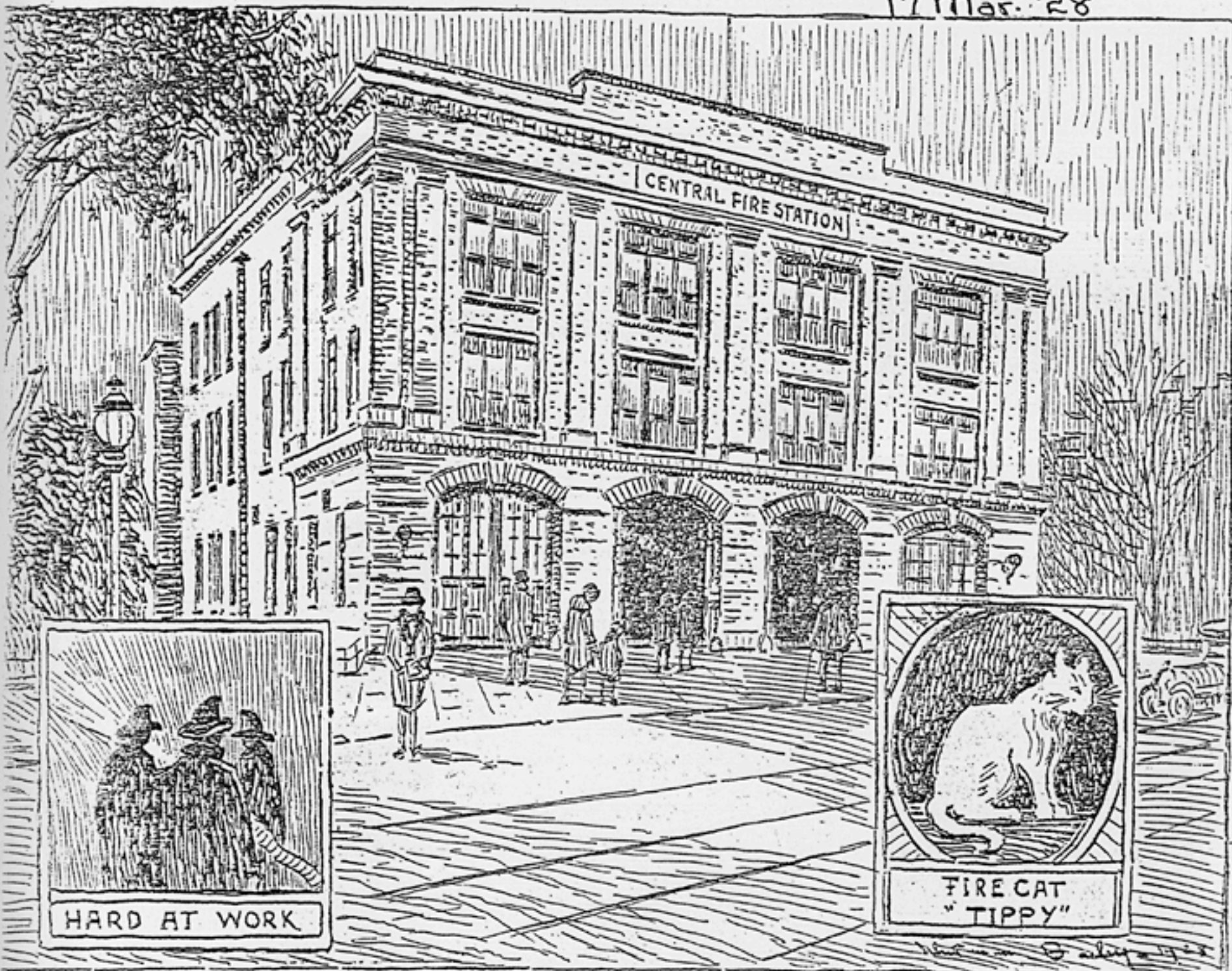


17 Mar. '28



fire bell always acts upon the people as a magnet to a piece of life. Perhaps no moment during our life in Stamford is more tense than when the big bell in the Town Hall peals forth in metallic sounds, a number of a certain fire box lids are thrown wide open in the neighborhood and business is set at a standstill. This is a time when we must catch a flying glimpse of the Stamford Fire Department as it goes thundering by. Some of us can still remember the Central Station at the corner of Center Street and Advocate Place. In a fire, one might say, were at a distance as far as common occur-

rence is concerned. Stamford was then a comparatively small city and building congestion was not so great. In fact a brush fire was at that time about the main excitement or possibly some chimney that had been clogged with soot.

Today we see near St. John's Park on Main Street a large modern building of three stories, which is now Stamford's Fire Headquarters. It is here where our able Chief Victor H. Velt and Deputy Chief Louis Y. Kront are on duty, and are called to hoist approximately 450 fires a year of which about 150 are bell alarms.

This beautiful building with its

large airy rooms is about as fine an example of a fire station as can be found anywhere in the New England States. One glimpse of its spacious interior, is an inspiration to become a fireman, for here we find a splendid equipment of books, magazines, radio sets, and a pool table which is, no doubt, a great help in passing away silent hours which are apt to occur at any time.

In the above drawing Mr. Bailey has made a small inserted sketch of fire cat "Tippy." This devoted animal, although a fond and true member of the Central Fire Station, seldom goes to fires, as "Tippy" feels it her extreme duty to remain down cellar most of the time, where she

has already won a distinguished medal as a "mouser."

On the left of the picture we find another small insertion of our boys at work in full regalia, trying out the hose, while a glimpse just beyond the main building shows us the training tower consisting of five stories in height.

Stamford at the present time has three fire stations. Engine Company No. 2 on Pacific Street, the Central Fire Station No. 1, and Engine Company No. 3 on West Main and Fairfield Avenue. There are in all 65 members of this department of which 24 are enclosed within the walls of these three stations. This includes both officers and